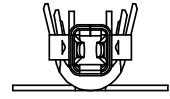
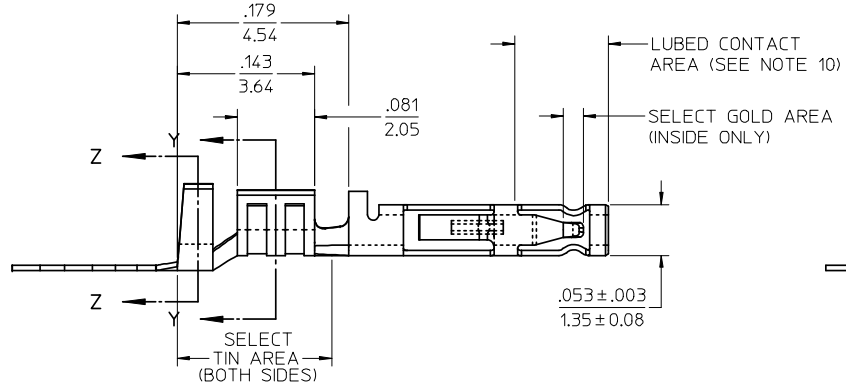
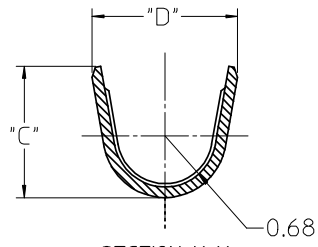
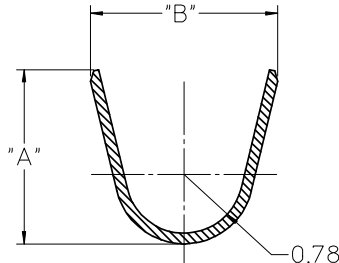
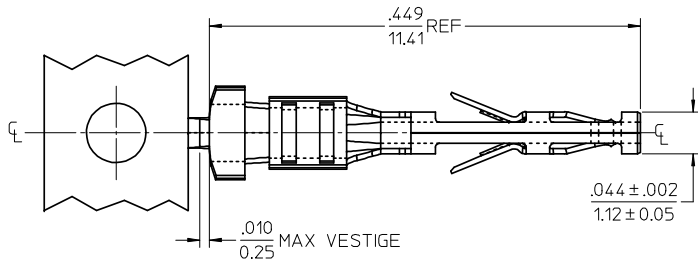
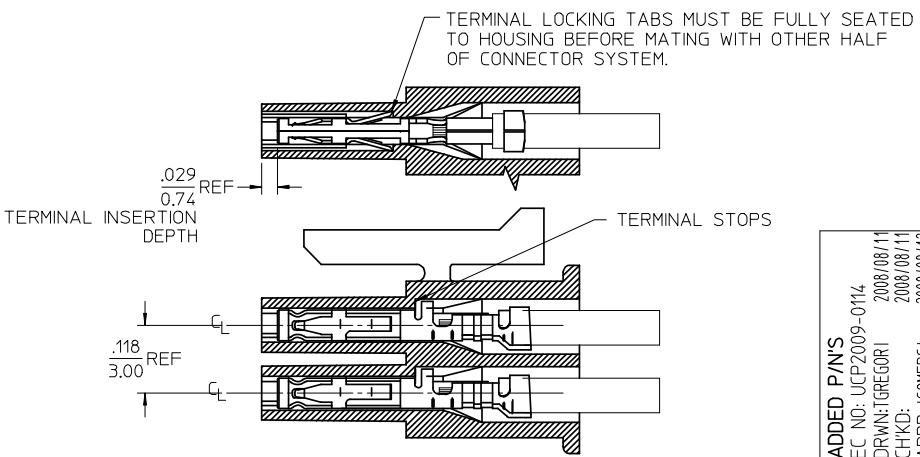


MATERIAL NUMBER	WIRE SIZE	PLATING OPTION	LUBRICATION	MAX INSULATION	"A" ±.012 ±0.30	"B" ±.012 ±0.30	"C" ±.012 ±0.30	"D" ±.012 ±0.30
46235-0001	20-24	1	NO	.073	.091	.098	.068	.073
46235-0002		2		1.85	2.30	2.48	1.73	1.93
46235-0003		1		.050	.075	.090	.048	.069
46235-0004	26-30	2	YES	1.27	1.90	2.29	1.22	1.75
46235-5001		1		.073	.091	.098	.068	.073
46235-5002	2	1.85		2.30	2.48	1.73	1.93	
46235-5003	26-30	1		.050	.075	.090	.048	.069
46235-5004		2		1.27	1.90	2.29	1.22	1.75



- NOTES
- MATERIAL: TIN BRASS ALLOY
  - TERMINAL PLATING:
    - .000015/0.00038 MIN. SELECT GOLD .000100/0.00254 MIN. SELECT TIN ALL OVER .000050/0.00127 MIN. NICKEL OVERALL.
    - .000030/0.00076 MIN. SELECT GOLD .000100/0.00254 MIN. SELECT TIN ALL OVER .000050/0.00127 MIN. NICKEL OVERALL.
  - PRODUCT SPECIFICATION: PS-46235-001
  - PACKAGING SPECIFICATION: PK-46235-001
  - TERMINAL FOR USE IN RECEPTACLE SERIES 43025, 43645 AND 44133.
  - FOR TERMINAL ORIENTATION IN RECEPTACLE SEE PICTORIAL IN LOWER LEFT CORNER
  - THIS TERMINAL IS DESIGNED IN METRIC
  - MOLEX RECOMMENDS THE USE OF MICRO-FIT TEST PLUG (SERIES 44242) WHENEVER CONTINUITY TESTING IS PERFORMED. TEST PLUGS MUST NOT BE USED TO MAKE OR BREAK UNDER LOAD. MOLEX DOES NOT RECOMMEND USING STANDARD MATING COMPONENTS (SERIES 43020, 43045, 43640, 43650, OR 43031) FOR HARNESS TESTING PURPOSES
  - THIS PART CONFORMS TO CLASS B REQUIREMENTS OF COSMETIC SPEC PS-45499-002
  - MOLEX PROPRIETARY CONTACT LUBRICATION EB-1 IS APPLIED IN THE CONTACT AREA AS SHOWN



ADDED P/N'S EC NO: UCP2009-0114 DRWN: TGREGORI 2008/08/11 CHKD: JCOMERC I 2008/08/11 APPR: JCOMERC I 2008/08/12	QUALITY SYMBOLS	GENERAL TOLERANCES (UNLESS SPECIFIED)	DIMENSION STYLE	SCALE	DESIGN UNITS	THIRD ANGLE PROJECTION																													
	$\nabla=0$ $\nabla=0$	<table border="1"> <tr> <th></th> <th>mm</th> <th>INCH</th> </tr> <tr> <td>4 PLACES</td> <td>± .010</td> <td>± .0004</td> </tr> <tr> <td>3 PLACES</td> <td>± .010</td> <td>± .0004</td> </tr> <tr> <td>2 PLACES</td> <td>± 0.25</td> <td>± .010</td> </tr> <tr> <td>1 PLACE</td> <td>± 0.35</td> <td>± .014</td> </tr> </table>		mm	INCH	4 PLACES	± .010	± .0004	3 PLACES	± .010	± .0004	2 PLACES	± 0.25	± .010	1 PLACE	± 0.35	± .014	<table border="1"> <tr> <th>IN/MM</th> <th>DATE</th> </tr> <tr> <td>DRAWN BY</td> <td>TGREGORI</td> </tr> <tr> <td>DATE</td> <td>2007/02/05</td> </tr> <tr> <td>CHECKED BY</td> <td>JCOMERC I</td> </tr> <tr> <td>DATE</td> <td></td> </tr> <tr> <td>APPROVED BY</td> <td>JCOMERC I</td> </tr> <tr> <td>DATE</td> <td></td> </tr> </table>	IN/MM	DATE	DRAWN BY	TGREGORI	DATE	2007/02/05	CHECKED BY	JCOMERC I	DATE		APPROVED BY	JCOMERC I	DATE		10:1	METRIC	
		mm	INCH																																
	4 PLACES	± .010	± .0004																																
3 PLACES	± .010	± .0004																																	
2 PLACES	± 0.25	± .010																																	
1 PLACE	± 0.35	± .014																																	
IN/MM	DATE																																		
DRAWN BY	TGREGORI																																		
DATE	2007/02/05																																		
CHECKED BY	JCOMERC I																																		
DATE																																			
APPROVED BY	JCOMERC I																																		
DATE																																			
DESCRIPTION	DRAFT WHERE APPLICABLE MUST REMAIN WITHIN DIMENSIONS	ANGULAR ±1/2°	MATERIAL NO.	DOCUMENT NO.	MICRO-FIT (3.0) FEMALE CRIMP TERMINAL LOW MATE FORCE MOLEX INCORPORATED																														
REV			46235-000*	SD-46235-001	SHEET NO. 1 OF 1																														